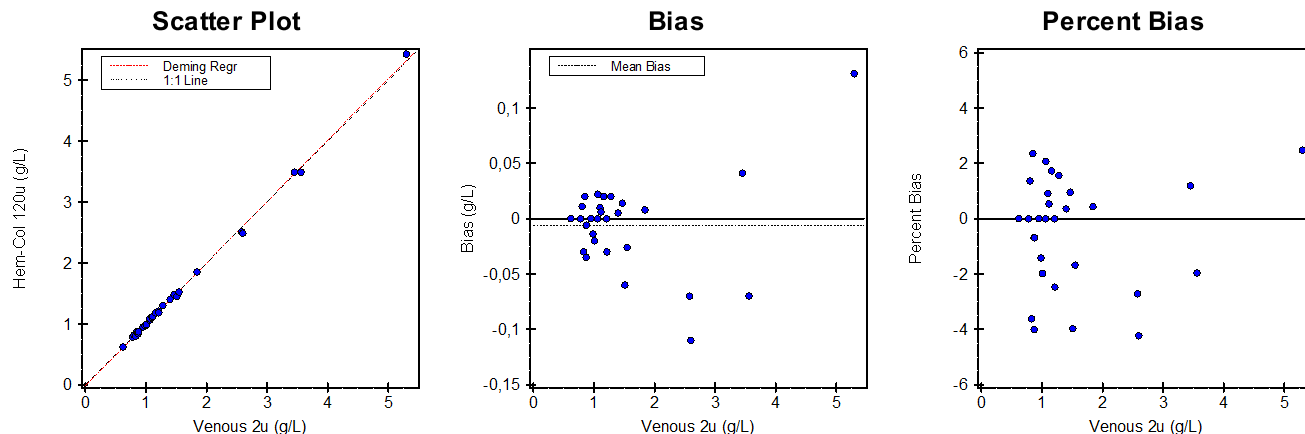


Alternate (Quantitative) Method Comparison

X Method Venous 2u

Y Method Hem-Col 120u



Regression Analysis

	Deming	Regular
Slope	1,009 (0,994 to 1,025)	1,009 (0,993 to 1,024)
Intercept	-0,0202 (-0,0487 to 0,0083)	-0,0190 (-0,0475 to 0,0095)
Std Err Est	0,0420	0,0420

95% Confidence Intervals are shown in parentheses

Supporting Statistics

Corr Coef (R)	0,9992	SubRange Bounds	None
Bias	-0,0058 (-0,3848 %)	Points (Plotted/Total)	29/30
X Mean ± SD	1,5143 ± 1,0461	Outliers	None
Y Mean ± SD	1,5084 ± 1,0560	Scatter Plot Bounds	None
Std Dev Diff	0,0422		

Experiment Description

	X Method	Y Method
Expt Date	20 jun 2018	20 jun 2018
Rep SD	1	1
Result Ranges	0,620 to 5,300	0,620 to 5,431
Units	g/L	g/L
Reagent	--	--
Calibrators	--	--
Analyst	R. Huisman	R. Huisman
Comment		

Accepted by: _____

Signature

Date

Alternate (Quantitative) Method Comparison

X Method Venous 2u

Y Method Hem-Col 120u

Experimental Results

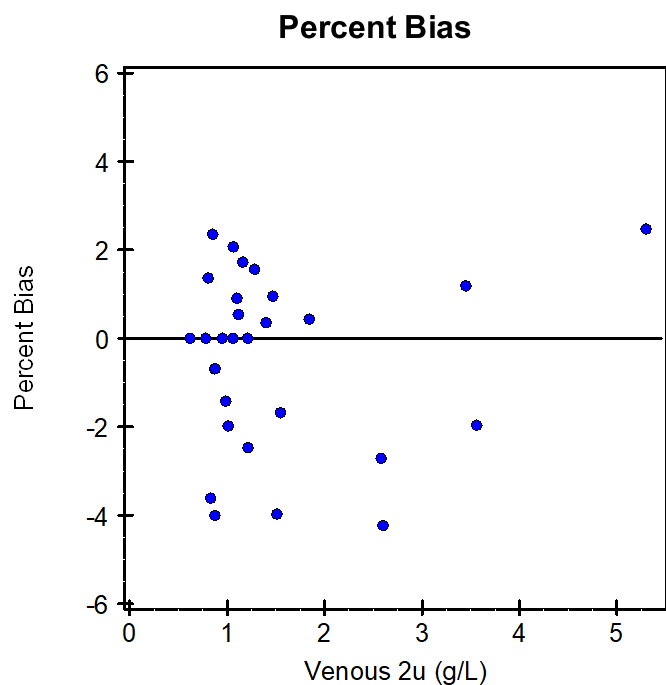
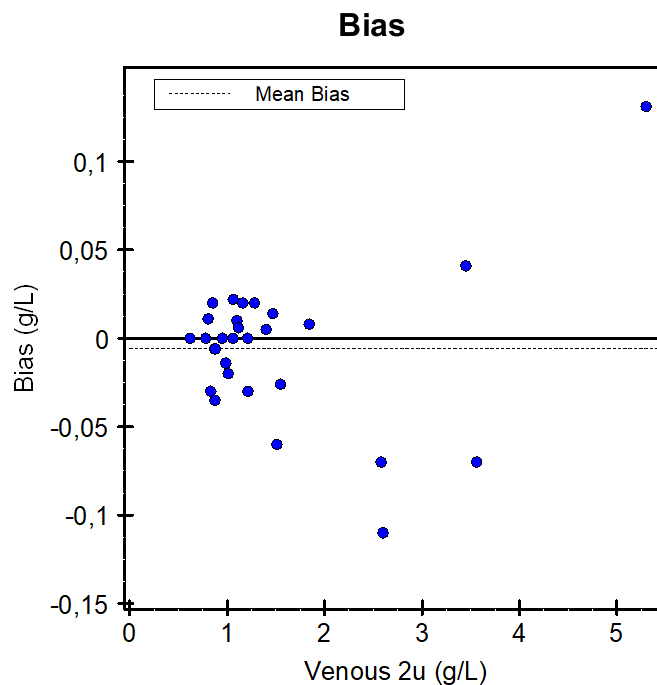
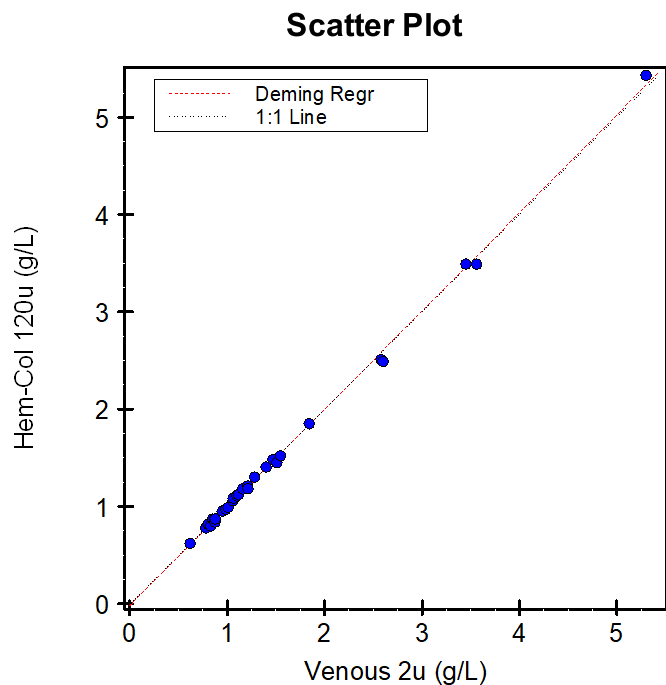
Specimen	X	Y	Bias	Specimen	X	Y	Bias	Specimen	X	Y	Bias
S00001	1,281	1,301	0,020	S00011	0,874	0,839	-0,035	S00021	0,83	0,80	-0,03
S00002	1,843	1,851	0,008	S00012	1,213	1,183	-0,030	S00022	2,58	2,51	-0,07
S00003	X	0,321 #WAARDE!		S00013	1,063	1,085	0,022	S00023	0,62	0,62	0,00
S00004	1,547	1,521	-0,026	S00014	3,450	3,491	0,041	S00024	0,78	0,78	0,00
S00005	0,871	0,865	-0,006	S00015	0,805	0,816	0,011	S00025	1,10	1,11	0,01
S00006	0,878	0,872	-0,006	S00016	0,985	0,971	-0,014	S00026	1,06	1,06	0,00
S00007	1,400	1,405	0,005	S00017	0,85	0,87	0,02	S00027	2,60	2,49	-0,11
S00008	5,300	5,431	0,131	S00018	1,16	1,18	0,02	S00028	1,51	1,45	-0,06
S00009	1,468	1,482	0,014	S00019	1,21	1,21	0,00	S00029	3,56	3,49	-0,07
S00010	1,116	1,122	0,006	S00020	0,95	0,95	0,00	S00030	1,01	0,99	-0,02

Values with an "X" were excluded from the calculations. Outliers "O" were also excluded.

Alternate (Quantitative) Method Comparison

X Method Venous 2u

Y Method Hem-Col 120u



This page contains a larger, working copy of the same graphs that appear on page 1.